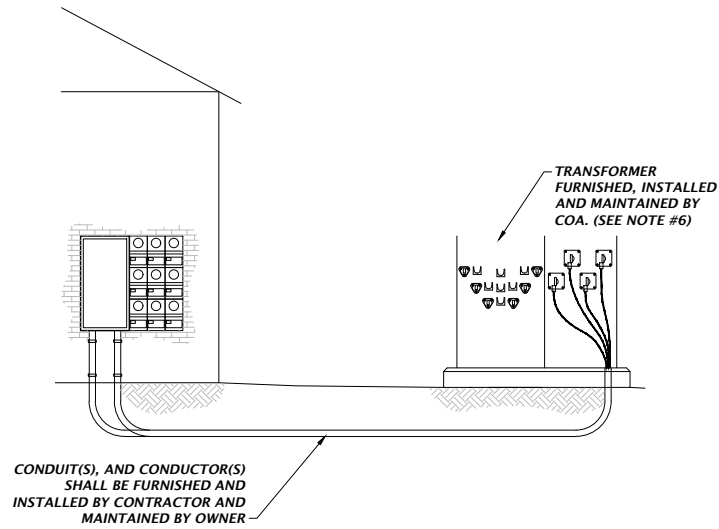


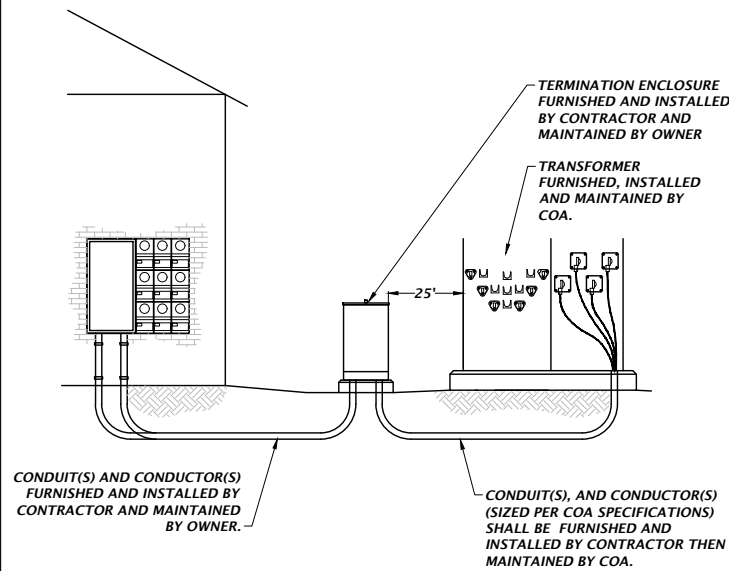


- NOTES:**
1. COA - APPROVED METER CENTER FURNISHED AND INSTALLED BY CONTRACTOR AND MAINTAINED BY OWNER.
  2. METER CENTERS WITH RING TYPE DESIGN SHALL BE FURNISHED BY CONTRACTOR WITH SCREW TYPE RINGS APPROVED BY COA.
  3. LINE-SIDE DISCONNECT WITH OVERCURRENT DEVICE IS REQUIRED.
  4. LOAD-SIDE SERVICE DISCONNECTS AND OVERCURRENT DEVICES ARE REQUIRED.
  5. ALL CONDUCTORS AND CONDUITS SHALL BE FURNISHED AND INSTALLED BY CONTRACTOR AND MAINTAINED BY OWNER.
  6. ALL CONNECTIONS IN THE TRANSFORMER WILL BE MADE BY COA.



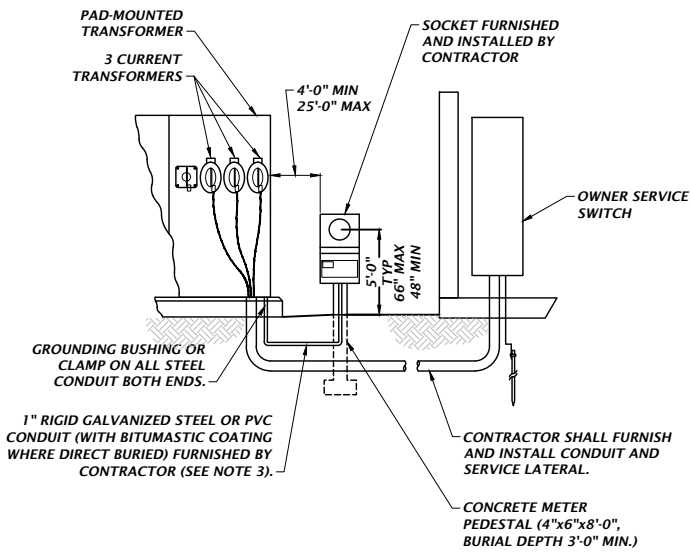
**569** UNDERGROUND NON-RESIDENTIAL SERVICE  
NTS

- NOTES:**
1. COA - APPROVED METER CENTER FURNISHED AND INSTALLED BY CONTRACTOR AND MAINTAINED BY OWNER.
  2. METER CENTERS WITH RING TYPE DESIGN SHALL BE FURNISHED BY CONTRACTOR WITH SCREW TYPE RINGS APPROVED BY COA.
  3. LINE-SIDE DISCONNECT WITH OVERCURRENT DEVICE IS REQUIRED.
  4. LOAD-SIDE SERVICE DISCONNECTS AND OVERCURRENT DEVICES ARE REQUIRED.
  5. ALL CONNECTIONS IN THE TRANSFORMER WILL BE MADE BY COA.

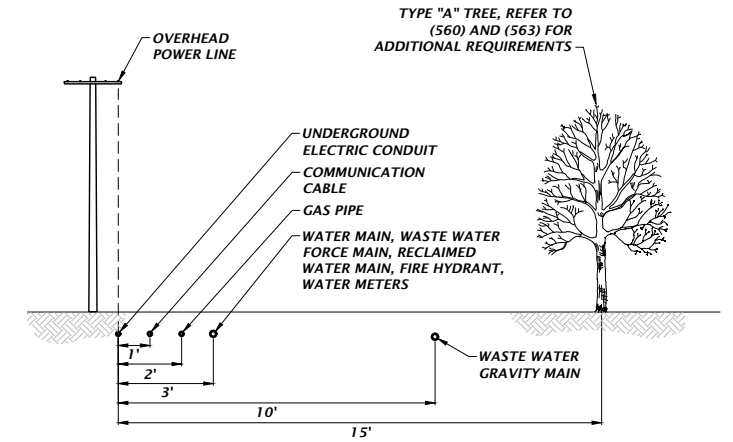


**572** ALTERNATIVE NON-RESIDENTIAL UNDERGROUND MULTI-METERED SERVICE USING A METER CENTER AND A TERMINATION ENCLOSURE  
NTS

- NOTES:**
1. CONTRACTOR MAY BE REQUIRED TO INSTALL CT'S IN A SEPARATE COMPARTMENT AT COA'S OPTION.
  2. SOCKET AND CONDUIT SHALL BE GROUNDED AT THE TRANSFORMER GROUND.
  3. METERING CONDUIT RISERS LOCATED IN AREAS SUBJECT TO PHYSICAL DAMAGE, AS DETERMINED BY A QUALIFIED COA EMPLOYEE, SHALL BE RIGID STEEL.
  4. DURING CONSTRUCTION, CONTRACTOR SHALL COORDINATE WITH COA FOR EXACT LOCATION OF CONDUIT, ETC.



**575** TYPICAL THREE-PHASE, PAD-MOUNT TRANSFORMER, TRANSFORMER-RATED METERING INSTALLATION SERVING ONE NON-RESIDENTIAL CUSTOMER  
NTS



- NOTES:**
1. MINIMUM DISTANCES ARE FROM TABLE IN PARAGRAPH 2.12 UTILITY SEPARATION, CITY OF ALACHUA DEPARTMENT OF PUBLIC SERVICES DESIGN AND CONSTRUCTION MANUAL, LATEST EDITION.

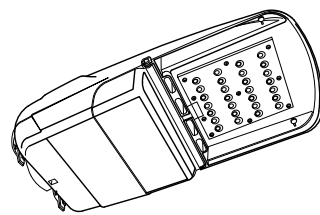
**578** MINIMUM HORIZONTAL DISTANCE BETWEEN ELECTRIC POWER LINES AND OTHER OBJECTS  
NTS



CITY OF ALACHUA

ELECTRIC SYSTEM APPROVED MATERIALS

LIGHT, STREET, LED 80W

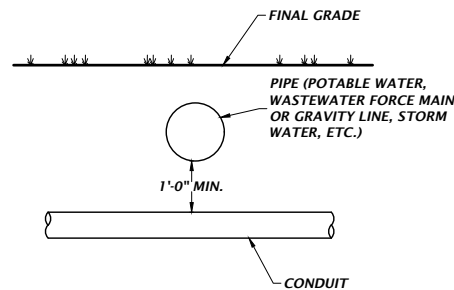


**DESCRIPTION**  
LED STREET LIGHT  
VOLTAGE: 120/277, 50/60Hz  
LENS TYPE: GLASS  
COLOR: GREY  
MATERIALS: ALUMINUM  
WATTAGE: 80-100 WATT

MANUFACTURER	CAT. NO.	STK. NO.
80 WATT-LED HOWARD LIGHTING	L402L-80-40K-T2-10-GRM	1813
80 WATT-LED EATON LIGHTING	VERD-S-CA1-80-740-U-T2-AP-10K-PR	
80 WATT-LED CREE LIGHTING	TRVMD-A-HT-2ME-10L-40K7-UL-GY-N	

PAGE LL-8.10

**581** CITY OF ALACHUA LIGHT, STREET, LED 80W  
NTS

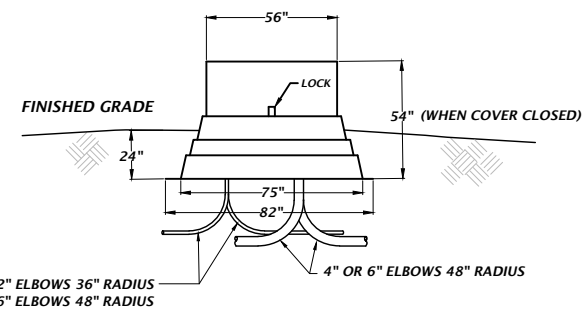


- GENERAL NOTE(S):**
- WHERE VERTICAL DISTANCES BETWEEN EXISTING CONDUIT AND NEW PIPE ARE LESS THAN MINIMUM, CONTRACTOR SHALL PERFORM WORK TO ACHIEVE THE MINIMUM VERTICAL SEPARATION DISTANCE. CONTRACTOR SHALL COORDINATE REQUIRED WORK WITH CITY.
  - CONTRACTOR SHALL EITHER:
    - REPLACE EXISTING CONDUIT AND CONDUCTORS WITH RE-ROUTED NEW CONDUIT AND CONDUCTORS.
    - OR--
    - KEEP EXISTING CONDUIT AS IS. INSTEAD INSTALL NEW PIPE BELOW EXISTING CONDUIT.

**587** VERTICAL DISTANCE REQUIREMENT BETWEEN CONDUIT AND PIPE  
NTS

**GENERAL NOTE(S):**

- DO NOT CUT OFF ELBOWS. ELBOWS AT EQUIPMENT LOCATIONS AND THE CONDUIT SYSTEM TRANSITION TO THIS EQUIPMENT WILL BE INSTALLED DEEPER THAN THE NOMINAL INSTALLATION DEPTH TO MEET TURN-UP REQUIREMENTS. ELBOWS SHALL BE TURNED UP IN CENTER PORTION OF BASE.
- 2", 4", or 6" CONDUIT SHALL BE USED AS SHOWN ON THE SITE PLAN.
- PROVIDE THREE 4-WAY JUNCTION BARS AT ALL LOCATIONS. GROUND PER NATIONAL ELECTRICAL SAFETY CODE.
- FOR 4" AND 6" CONDUIT, 48" RADIUS ELBOWS ARE REQUIRED; FOR LESS THAN 4" CONDUIT 36" RADIUS ELBOWS ARE REQUIRED
- CABINET MADE BY COA - APPROVED MANUFACTURER.
- DIMENSIONS SHOWN ARE IN NOMINAL INCHES



**528** TYPICAL FIBERGLASS SECTIONALIZING CABINET (SC)  
NTS

05D ELECTRICAL DETAILS - SEE 151 FOR ABBREVIATIONS