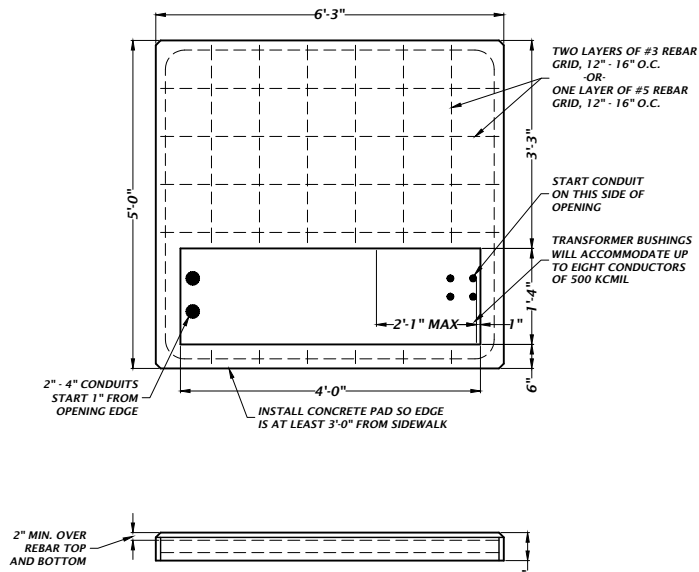


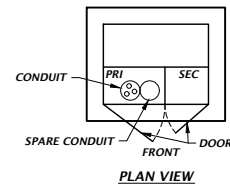
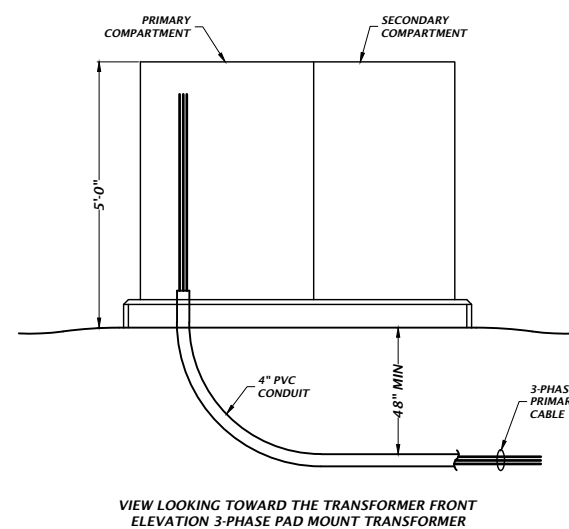
- NOTES:**
1. LOCATE TRANSFORMER FRONT 8' TO 15' FROM PAVING FOR LINE TRUCK ACCESS.
 2. LOCATE TRANSFORMER A MINIMUM OF 4' FROM THE BUILDING DRIP LINE AND 10' FROM ANY WINDOW OR DOOR.
 3. MAINTAIN 10' SEPARATION FROM FIRE HYDRANT, TRASH DUMPSTER OR TRASH COMPACTOR.
 4. TERMINATE CONDUITS FLUSH WITH TOP OF PAD.
 5. CONCRETE SHALL BE 3500 PSI POURED IN PLACE OR COA-APPROVED PRECAST.
 6. CONTRACTOR SHALL COORDINATE WITH COA FOR EXACT LOCATION OF CONDUIT, ETC.
 7. PROVIDE 10 FEET OF LEVEL, STABILIZED EARTH AT FRONT AND BACK OF UNIT, AND 4- FEET AT EACH SIDE.

584A CONCRETE MOUNTING PAD AND CONDUIT PLACEMENT FOR THREE-PHASE TRANSFORMERS, 750-2500 KVA
NTS



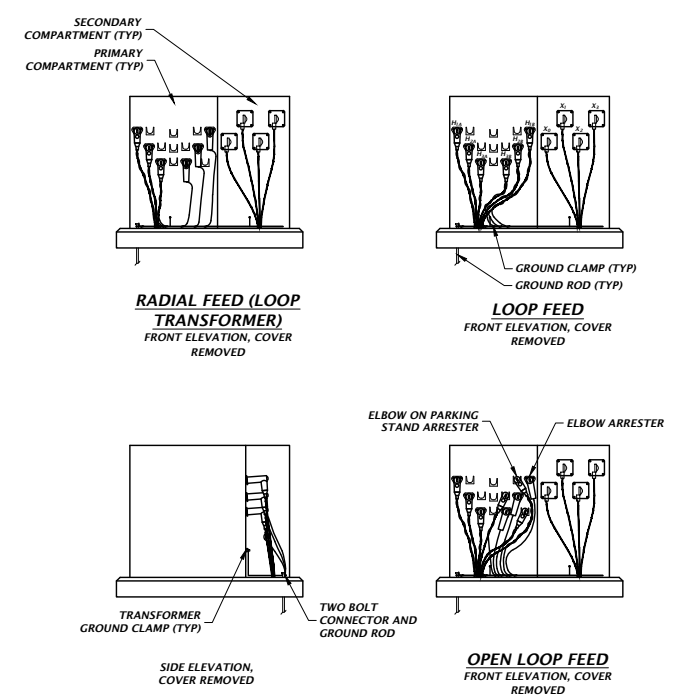
- NOTES:**
1. LOCATE TRANSFORMER FRONT 8' TO 15' FROM PAVING FOR LINE TRUCK ACCESS.
 2. LOCATE TRANSFORMER A MINIMUM OF 4' FROM THE BUILDING DRIP LINE AND 10' FROM ANY WINDOW OR DOOR.
 3. MAINTAIN 10' SEPARATION FROM FIRE HYDRANT, TRASH DUMPSTER OR TRASH COMPACTOR.
 4. TERMINATE CONDUITS FLUSH WITH TOP OF PAD.
 5. CONCRETE SHALL BE 3500 PSI POURED IN PLACE OR COA-APPROVED PRECAST.
 6. PROVIDE 10 FEET OF LEVEL, STABILIZED EARTH AT FRONT AND BACK OF UNIT, AND 4- FEET AT EACH SIDE.

584B CONCRETE MOUNTING PAD AND CONDUIT PLACEMENT FOR THREE-PHASE TRANSFORMERS, 75-500 KVA
NTS

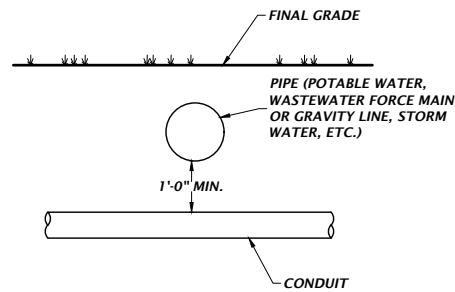


- NOTES:**
1. STUB UP 3-PHASE PRIMARY CABLE 5'-0" ABOVE GROUND AND IN THE CENTER OF THE PRIMARY TRANSFORMER COMPARTMENT.
 2. CAP OR TAPE ALL CUT CABLE ENDS.
 3. 3-PHASE PRIMARY REQUIRES 4" PVC CONDUIT.
 4. CONDUIT AND CONDUCTORS ARE SHOWN FOR THE RADIAL FEED/LOOP TRANSFORMER CONFIGURATION. FOR LOOP FEED AND OPEN LOOP FEED TRANSFORMERS, PROVIDE CONDUIT AND CONDUCTORS AS REQUIRED.

584C THREE-PHASE PAD MOUNT CONDUIT PLACEMENT
NTS



584D THREE-PHASE PAD MOUNT TRANSFORMER CONFIGURATIONS
NTS



- GENERAL NOTE(S):**
- WHERE VERTICAL DISTANCES BETWEEN EXISTING CONDUIT AND NEW PIPE ARE LESS THAN MINIMUM, CONTRACTOR SHALL PERFORM WORK TO ACHIEVE THE MINIMUM VERTICAL SEPARATION DISTANCE. CONTRACTOR SHALL COORDINATE REQUIRED WORK WITH CITY.
 - CONTRACTOR SHALL EITHER:
 - REPLACE EXISTING CONDUIT AND CONDUCTORS WITH RE-ROUTED NEW CONDUIT AND CONDUCTORS.
 - OR-
 - KEEP EXISTING CONDUIT AS IS. INSTEAD INSTALL NEW PIPE BELOW EXISTING CONDUIT.

587 VERTICAL DISTANCE REQUIREMENT BETWEEN CONDUIT AND PIPE
NTS