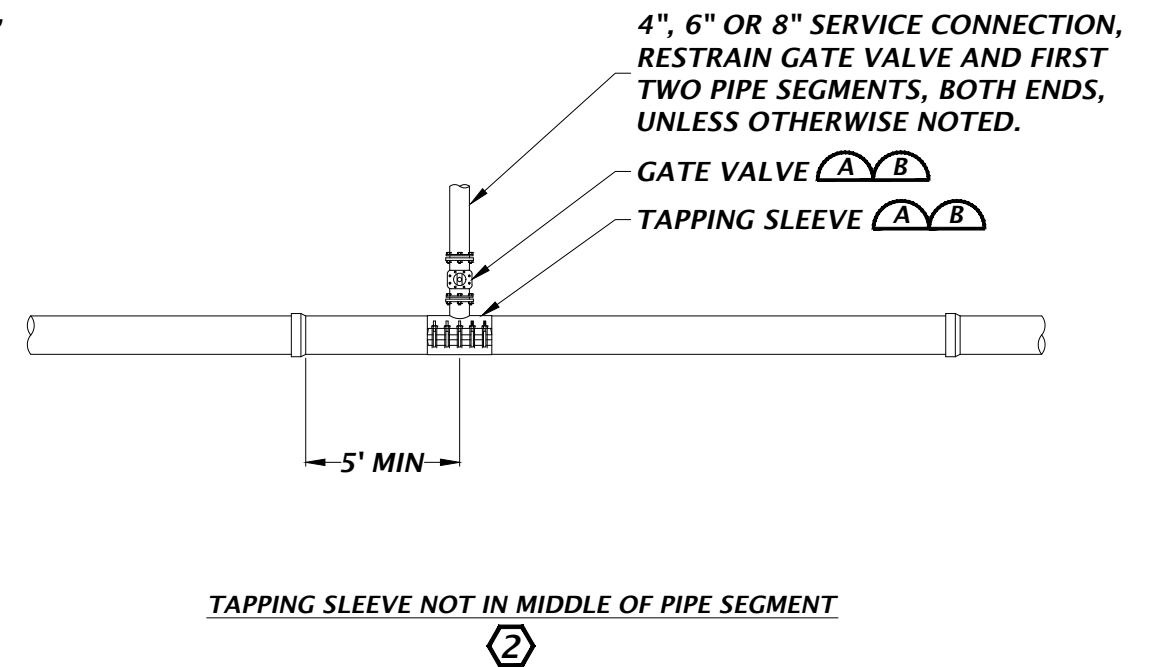
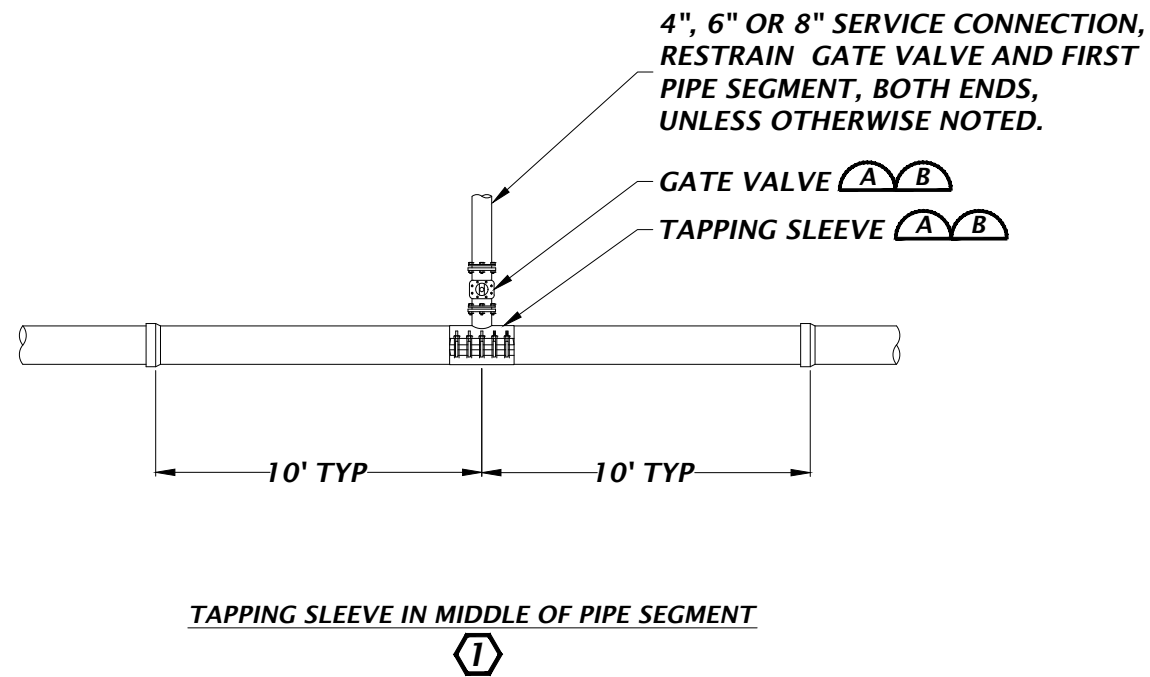
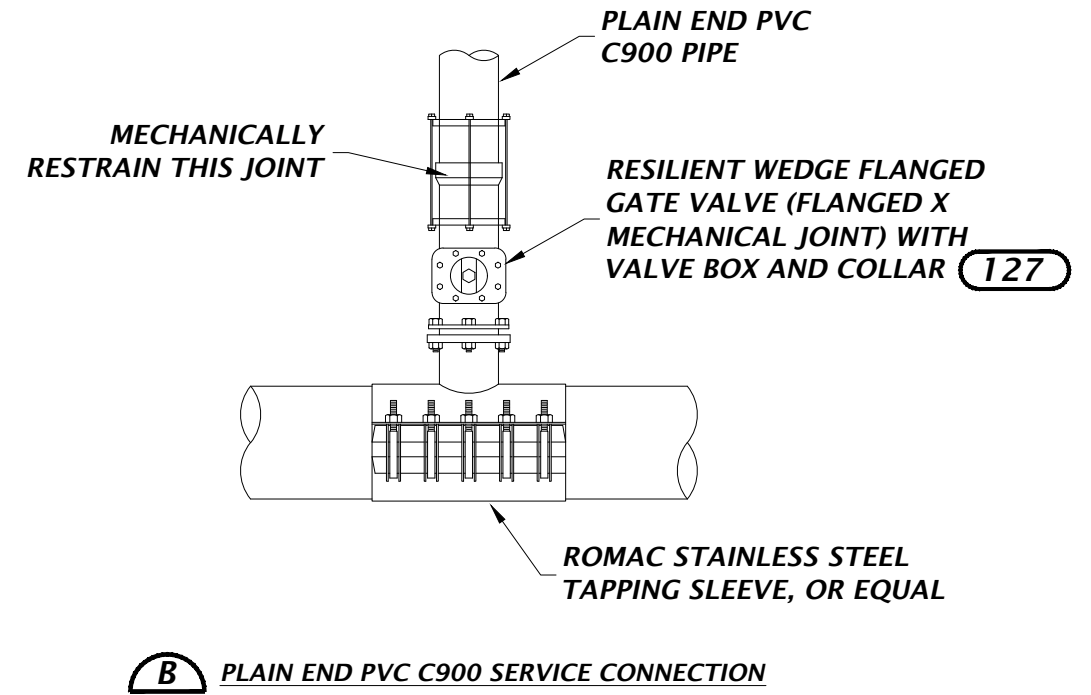
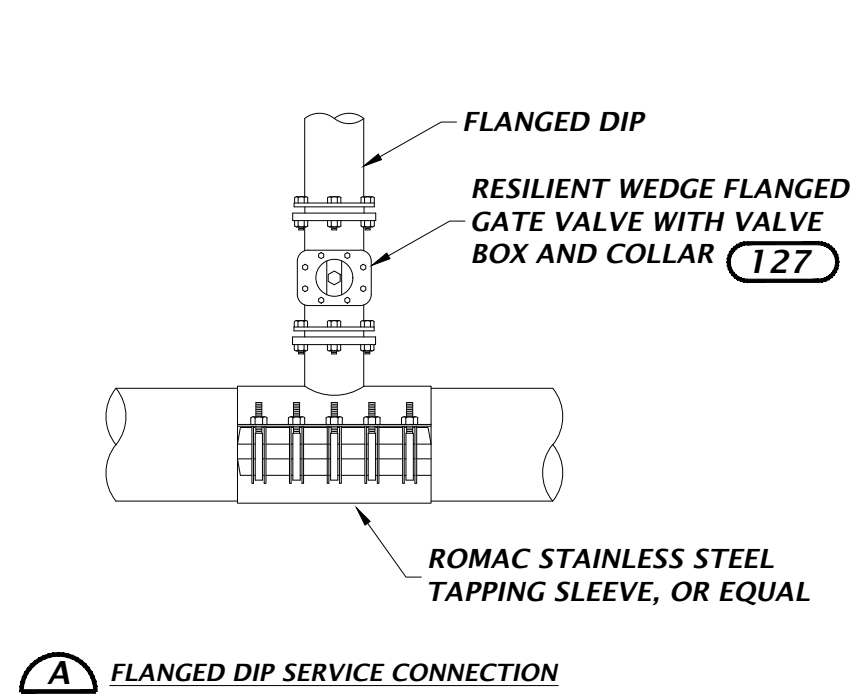


GENERAL NOTE(S)

1. MINIMUM RESTRAINED LENGTHS ARE BASED ON (309) AND ARE SUFFICIENT FOR BOTH DIP AND PVC PIPE.
2. THIS DETAIL APPLIES TO BOTH NEW SERVICE CONNECTIONS INSTALLED ON NEW PIPE AND NEW SERVICE CONNECTIONS INSTALLED ON EXISTING PIPE.

KEYED NOTE(S):

- ① PREFERRED LOCATION TO REDUCE THRUST FORCES IN THE PIPE BRANCH.
- ② IF 5' MIN DISTANCE BETWEEN JOINT AND TAPPING SLEEVE IS NOT POSSIBLE, CONTACT COA. THRUST FORCE ANALYSIS REQUIRED.



WATER SERVICE CONNECTION FOR NEW AND EXISTING MAINS - 4", 6" AND 8"

NTS