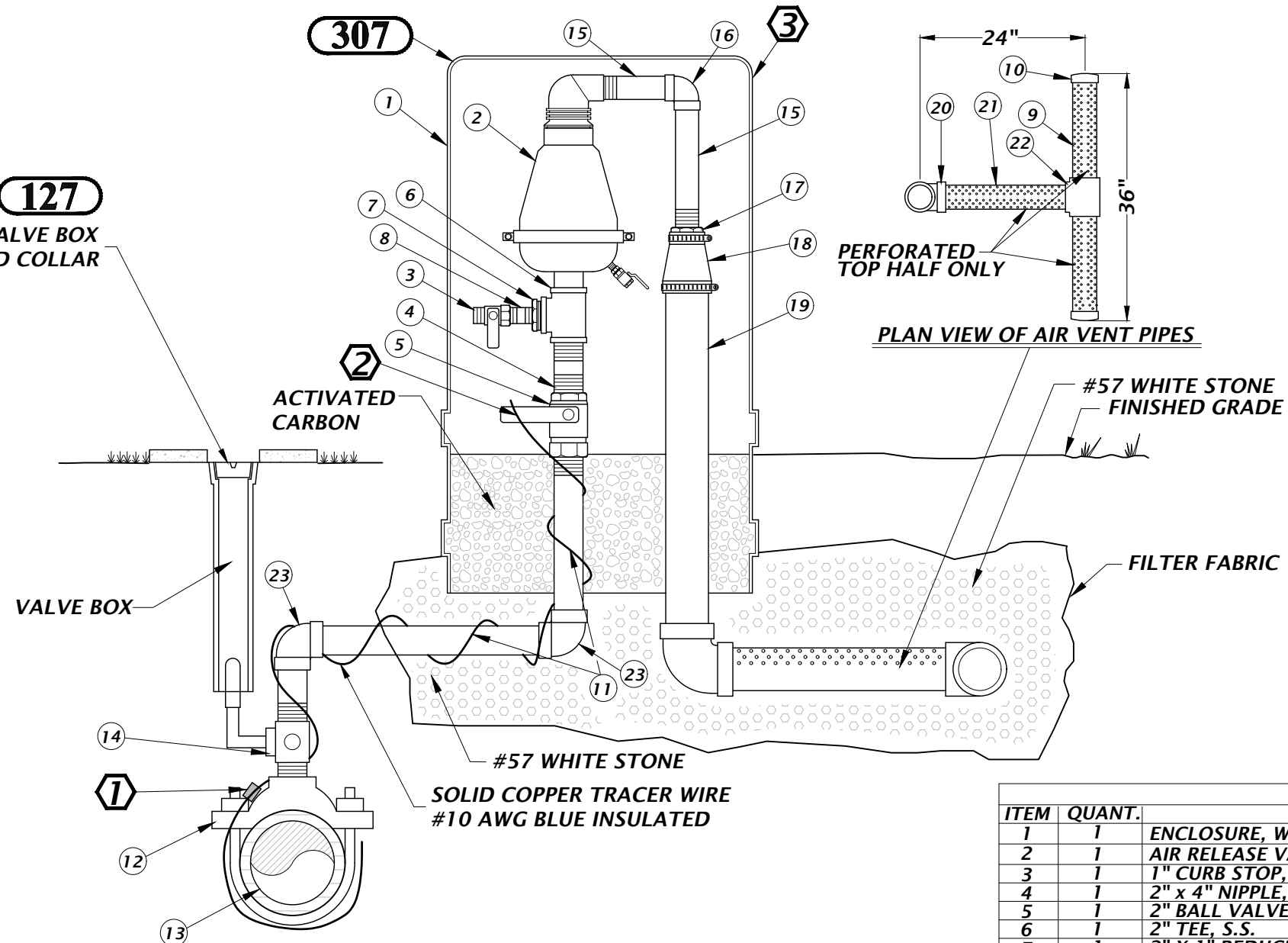


127
VALVE BOX
AND COLLAR



GENERAL NOTE(S):

1. AIR RELEASE VALVES 2" IN DIAMETER SHALL BE USED ON 4" THROUGH 12" DIAMETER FORCE MAINS. FOR 16" FORCE MAIN, PROVIDE TWO ARVs EACH 2" IN DIAMETER.
2. WASTEWATER AIR RELEASE VALVES SHALL HAVE ODOR PROTECTION AS SHOWN WHEN LOCATED ADJACENT TO RESIDENTIAL OR POPULATED AREAS.

KEYED NOTE(S):

- ① CONNECT TRACER WIRES FROM MAIN TO ARV WITH PRO-LINE TRACER-LOCK CONNECTORS. PART # TL-LUG-SS.
- ② EXTEND TRACER WIRE AT LEAST 8-INCHES ABOVE GRADE
- ③ ENCLOSURE SHALL BE COLOR CODED GREEN.

MATERIALS		
ITEM	QUANT.	DESCRIPTION
1	1	ENCLOSURE, WATER PLUS CORPORATION MODEL #131632
2	1	AIR RELEASE VALVE 2" NPT, ARI MODEL D-025 FOR WASTEWATER, VENT-O-MAT 050RG11621S6
3	1	1" CURB STOP, S.S.
4	1	2" x 4" NIPPLE, S.S.
5	1	2" BALL VALVE, SST (WITH SST HANDLE AND SST NUTS)
6	1	2" TEE, S.S.
7	1	2" X 1" REDUCER, S.S.
8	1	1" SHORT NIPPLE, S.S.
9	2	3" PIPE, PVC, LENGTH AS SHOWN, PERFORATED TOP HALF ONLY
10	2	3" CAP, PVC
11	1	2" PIPE, S.S. LENGTH AS REQUIRED
12	1	2" DOUBLE STRAP TAPPING SADDLE, STAINLESS STEEL
13	1	4" & LARGER PIPE, D.I. OR PVC (DR-18)
14	1	MODEL 4001 S.S. FLANGED END BALL VALVE, 2" NUT WITH RIGHT ANGLE
15	2	1-1/2" PIPE, PVC, LENGTH AS REQUIRED
16	1	1-1/2" x 90° ELBOW, PVC
17	1	2" X 1-1/2" REDUCER, PVC
18	1	3" X 2" FLEX COUPLING
19	1	3" PIPE, PVC, LENGTH AS REQUIRED
20	1	3" x 90° ELBOW, PVC
21	1	3" PIPE, PVC, LENGTH AS SHOWN, PERFORATED TOP HALF ONLY
22	1	3" TEE, PVC
23	2	2" ELBOW, SST