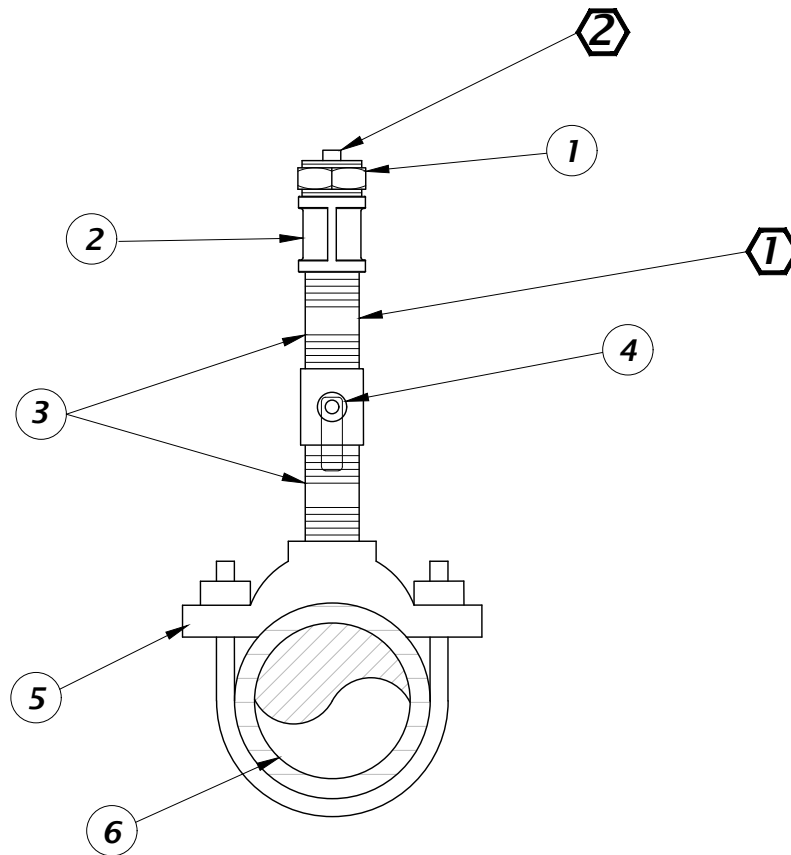


**GENERAL NOTE(S):**

1. SEE **236** FOR PRESSURE GAUGE ASSEMBLY.

**KEY NOTE(S):**

1. INSTALL NIPPLE OF SUFFICIENT LENGTH SO NEITHER PRESSURE GAUGE ASSEMBLY NOR FITTINGS WILL INTERFERE WITH BALL VALVE HANDLE.
2. FOR TEMPORARY GAUGE ASSEMBLY INSTALLATION, REMOVE PLUG AND FASTEN ASSEMBLY.



MATERIALS		
ITEM	QUANT.	DESCRIPTION
1	1	1/2" SST PLUG FITTING
2	1	1/2" FE X FE SST COUPLING
3	2	1/2" X 4" SST NIPPLE
4	1	1/2" SST BALL VALVE (WITH SST HANDLE AND SST NUTS)
5	1	1/2" SST DOUBLE STRAP TAPPING SADDLE
6	1	DUCTILE IRON PIPE (SIZE VARIES)

**233**

**PRESSURE GAUGE ASSEMBLY SERVICE  
CONNECTION  
NTS**

