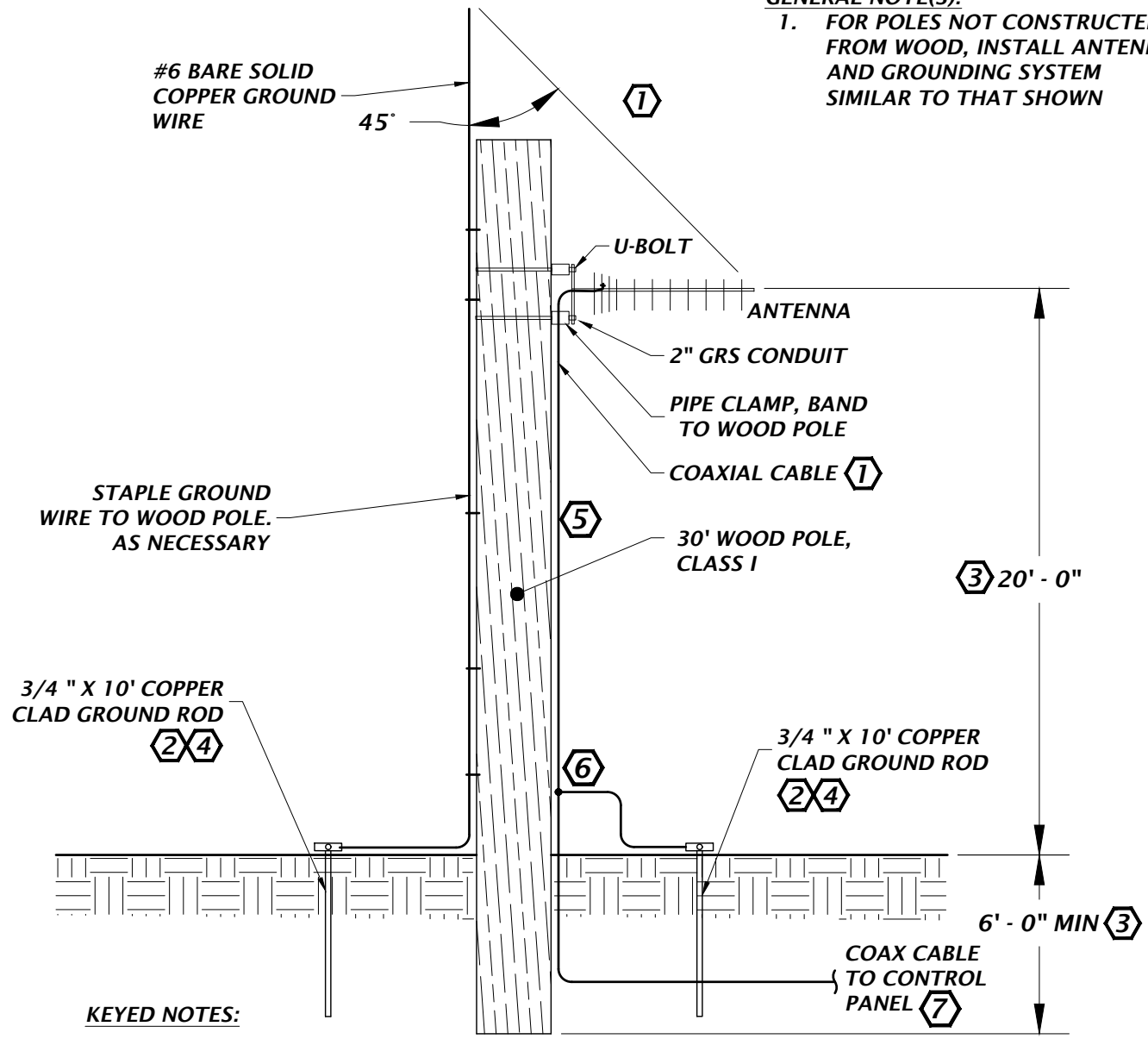


GENERAL NOTE(S):

1. FOR POLES NOT CONSTRUCTED FROM WOOD, INSTALL ANTENNA AND GROUNDING SYSTEM SIMILAR TO THAT SHOWN



KEYED NOTES:

- ① SECURE COAX CABLE USING CABLE CLAMP: POLYETHYLENE "KINDORF CABLE CLEAT" OR EQUAL. LAG BOLT CLAMP TO WOOD POLE. CONTRACTOR TO ROUTE COAX CABLE TO PANEL, UNLESS SHOWN OTHERWISE.
- ② DRIVE GROUND ROD TO 10' MIN
- ③ POLE HEIGHT AND POLE DEPTH SITE SPECIFIC. COORDINATE WITH CITY.
- ④ ALTERNATIVELY CONNECT TO SITE GROUNDING LOOP.
- ⑤ FASTEN COAX CABLE TO POLE BY METHOD APPROVED BY COA.
- ⑥ GROUND COAX CABLE BY MEANS OF STANDARD COAX CABLE KIT -TESSCO OR EQUAL. SELECT CONDUCTOR LENGTH SUITABLE FOR APPLICATION.
- ⑦ JUST PRIOR TO CONTROL PANEL ENTRY, ADDITIONALLY GROUND COAX CABLE BY MEANS OF STANDARD COAX CABLE GROUND KIT -TESSCO OR EQUAL. SELECT CONDUCTOR LENGTH SUITABLE FOR APPLICATION.

240

**TYPICAL ANTENNA POLE
INSTALLATION
NTS**

