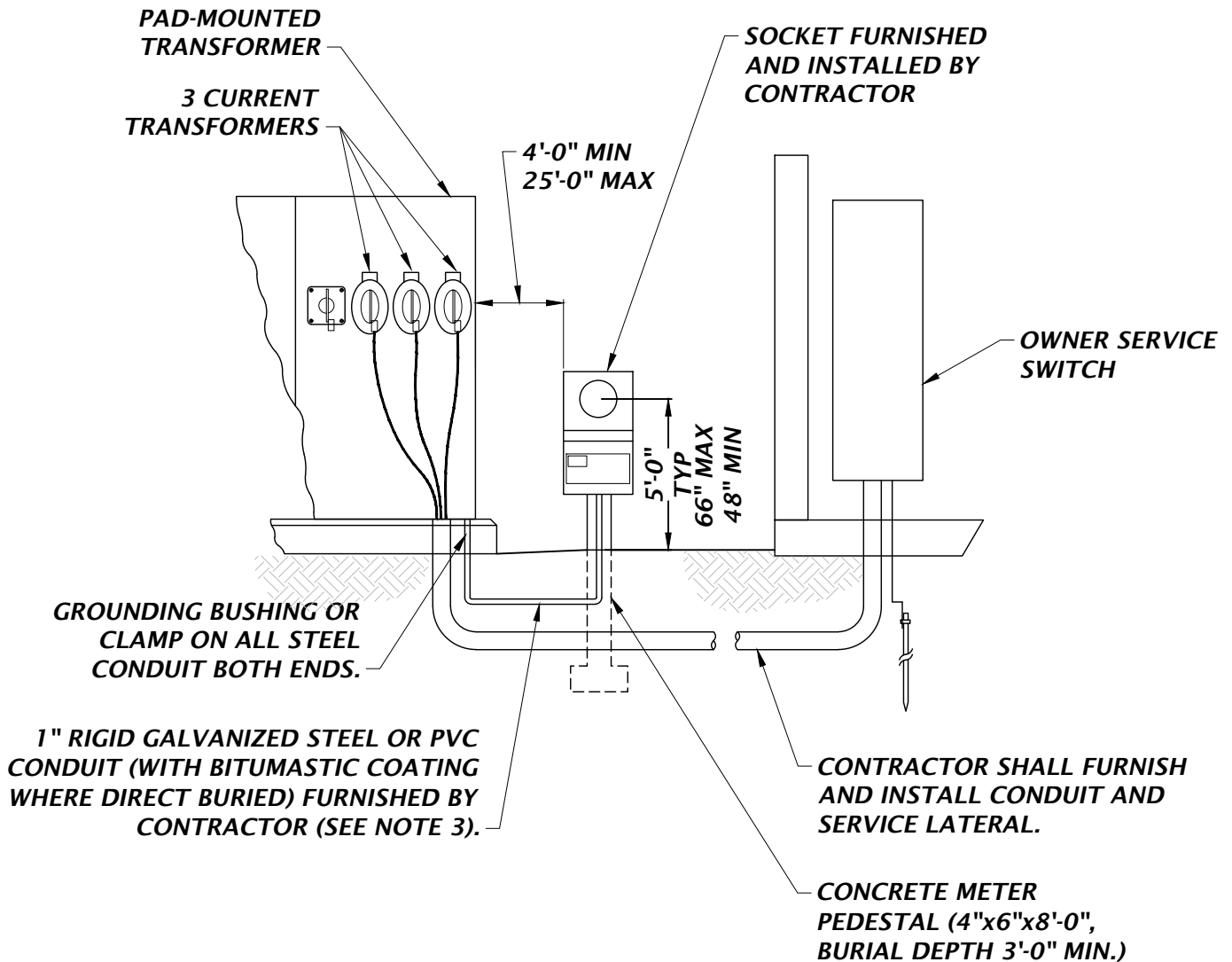


NOTES:

1. CONTRACTOR MAY BE REQUIRED TO INSTALL CT'S IN A SEPARATE COMPARTMENT AT COA'S OPTION.
2. SOCKET AND CONDUIT SHALL BE GROUNDED AT THE TRANSFORMER GROUND.
3. METERING CONDUIT RISERS LOCATED IN AREAS SUBJECT TO PHYSICAL DAMAGE, AS DETERMINED BY A QUALIFIED COA EMPLOYEE, SHALL BE RIGID STEEL.
4. DURING CONSTRUCTION, CONTRACTOR SHALL COORDINATE WITH COA FOR EXACT LOCATION OF CONDUIT, ETC.



575

**TYPICAL THREE-PHASE, PAD-MOUNT TRANSFORMER,
TRANSFORMER-RATED METERING INSTALLATION
SERVING ONE NON-RESIDENTIAL CUSTOMER**

NTS

